

Location:



# T1400-PB with No Edge Rail

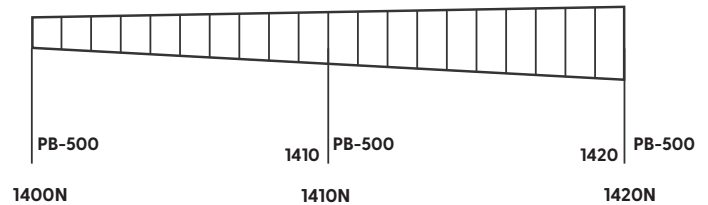
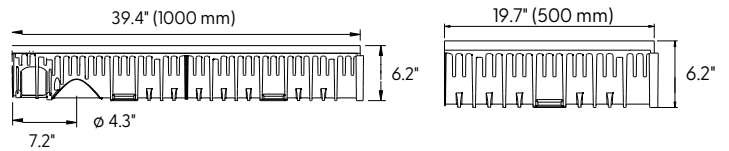
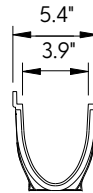


## Specification:

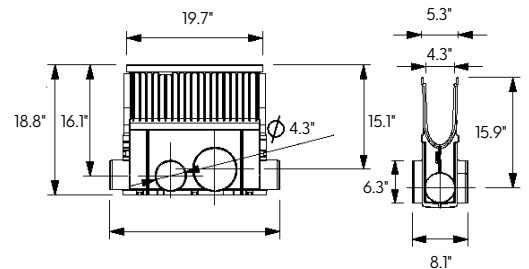
MIFAB®'s T1400-PB series channels shall be 39.4" (1000 mm) long with a 4" (100 mm) internal width and radius bottom. Interconnecting channel sections are made of high strength Glass Fiber Reinforced Polyester (GRP) and available in sloping (0.5%) and non-sloping (neutral) channels. Each channel comes with no edge rail. Directional Change Channels available at neutral locations.

Installation devices, plastic end cap/outlet cap, catch basins and bottom outlets are available accessories. Grates (separate Specification Sheets) are available in in Load Class A-C in a variety of materials. Grates utilize the patented "Clipfix" locking mechanism.

CHANNEL MODEL NO.	BODY TYPE	INVERT BODY DEPTH		OVERALL BODY DEPTH		MAXIMUM FLOW GPM	WEIGHT (LESS GRATE) Lbs.
		E1 (Min.)	E2 (Max.)	E1 (Min.)	E2 (Max.)		
T1400N-PB	Neutral	5.78"	5.78"	6.23"	6.23"	334.97	7.94
T1400N-PB-500	Neutral	5.78"	5.78"	6.23"	6.23"	334.97	4.41
T1400N-PB-500-DC	Neutral	5.78"	5.78"	6.23"	6.23"	334.97	4.41
T1401-PB	Sloped	5.78"	5.98"	6.23"	6.42"	432.66	8.16
T1402-PB	Sloped	5.98"	6.18"	6.42"	6.62"	432.66	8.32
T1403-PB	Sloped	6.18"	6.38"	6.62"	6.82"	432.66	8.49
T1404-PB	Sloped	6.38"	6.57"	6.82"	7.01"	432.66	8.66
T1405-PB	Sloped	6.57"	6.77"	7.01"	7.21"	432.66	8.83
T1406-PB	Sloped	6.77"	6.97"	7.21"	7.41"	432.66	8.99
T1407-PB	Sloped	6.97"	7.16"	7.41"	7.60"	432.66	9.16
T1408-PB	Sloped	7.16"	7.36"	7.60"	7.80"	432.66	9.33
T1409-PB	Sloped	7.36"	7.56"	7.80"	8.00"	432.66	9.50
T1410-PB	Sloped	7.56"	7.75"	8.00"	8.19"	704.84	9.67
T1410N-PB	Neutral	7.75"	7.75"	8.19"	8.19"	586.19	9.57
T1410N-PB-500	Neutral	7.75"	7.75"	8.19"	8.19"	586.19	4.78
T1410N-PB-500-DC	Neutral	7.75"	7.75"	8.19"	8.19"	586.19	4.78
T1411-PB	Sloped	7.75"	7.95"	8.19"	8.39"	702.84	9.83
T1412-PB	Sloped	7.95"	8.15"	8.39"	8.59"	702.84	10.00
T1413-PB	Sloped	8.15"	8.34"	8.59"	8.78"	702.84	10.17
T1414-PB	Sloped	8.34"	8.54"	8.78"	8.98"	702.84	10.34
T1415-PB	Sloped	8.54"	8.74"	8.98"	9.18"	702.84	10.50
T1416-PB	Sloped	8.74"	8.93"	9.18"	9.38"	702.84	10.67
T1417-PB	Sloped	8.93"	9.13"	9.38"	9.57"	702.84	10.84
T1418-PB	Sloped	9.13"	9.33"	9.57"	9.77"	702.84	11.01
T1419-PB	Sloped	9.33"	9.53"	9.77"	9.97"	702.84	11.17
T1420-PB	Sloped	9.53"	9.72"	9.97"	10.16"	702.84	11.34
T1420N-PB	Neutral	9.72"	9.72"	10.16"	10.16"	802.54	11.42
T1420N-PB-500	Neutral	9.72"	9.72"	10.16"	10.16"	802.54	5.71
T1420N-PB-500-DC	Neutral	9.72"	9.72"	10.16"	10.16"	802.54	5.71



**T1400-CB620**  
No Edge Rail



**4" OUTLET CATCH BASIN**  
(6" OUTLET ALSO AVAILABLE)  
Sediment bucket included



### CLIPFIX ADVANTAGE

The MEA Glass Fiber Reinforced Polyester (GRP) channels have been designed for our universal CLIPFIX grate locking mechanism. The system (channel and grate) provides longitudinal shift protection.

Job Name: _____	Page No: _____
Section No: _____	Contractor: _____
Schedule No: _____	Purchase Order No: _____

Revision Date: 2022-02-16

CALIFORNIA PROPOSITION 65 WARNING. This product contains chemicals known to the State of California to cause cancer and birth defects or other reproductive harm.

MIFAB reserves the right to make changes in material and design without formal notice and obligation. USA: 1-800-465-2736 www.mifab.com CAN: 1-800-387-3880